


6745



 **JLL** SEE A BRIGHTER WAY

# FOR SALE OR LEASE

6745 Sugarloaf Pky, Duluth, GA 30097

## Property Highlights

- The total size of the building is 31,020 square feet.
- There is 28,232 square feet currently vacant.
- There is a long-term tenant occupying 2,400 square feet of the space.
- Availability date: June 1, 2024.



## Get in Touch

**Paul Hanna, CCIM**

Executive Vice President | Associate Broker

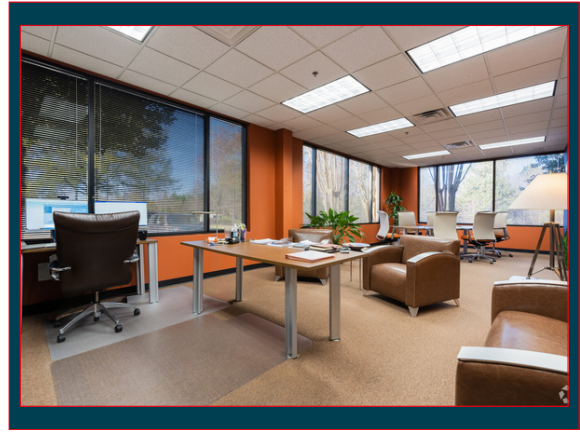
+1 (770) 698-9339

[Paul.Hanna@jll.com](mailto:Paul.Hanna@jll.com)





Lobby and Reception



Large Office



Suite Office Medium



Corner Office



Break Room and Suite Kitchen



Break Room



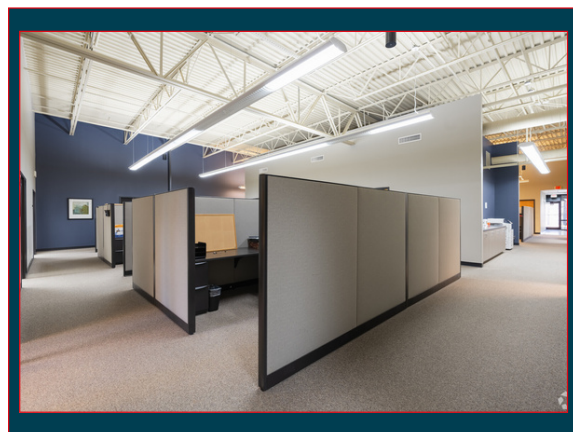
Large Conference Room



Office with Conference Area



Small Conference Room



Open Floor Plan with Cubicles



Document Room



Additional Open Floor Plan with Cubicles

## Get in Touch

**Paul Hanna, CCIM**

Executive Vice President | Associate Broker

+1 (770) 698-9339

[Paul.Hanna@jll.com](mailto:Paul.Hanna@jll.com)



6745 Sugarloaf Pky, Duluth, GA 30097



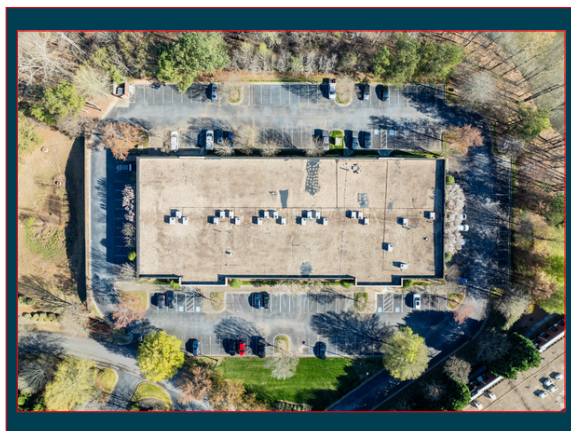
Modern Restrooms



Alternate Building with Garage



Garage



Building aerial showing 360 Parking

### Floorplan

